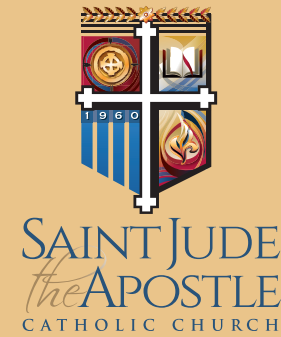
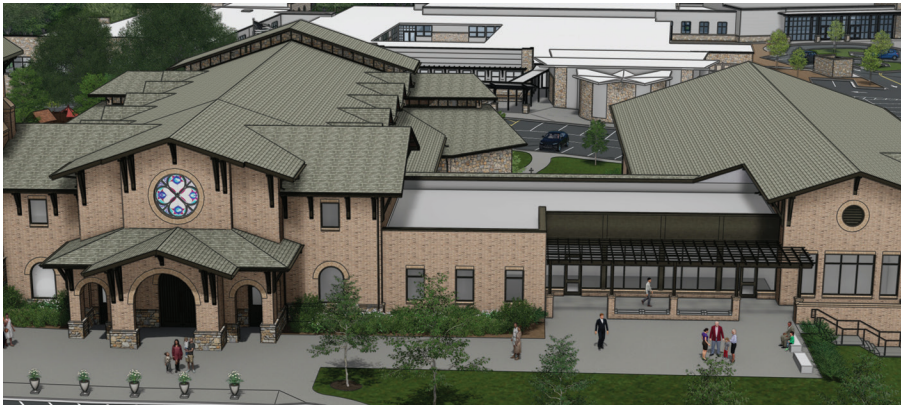


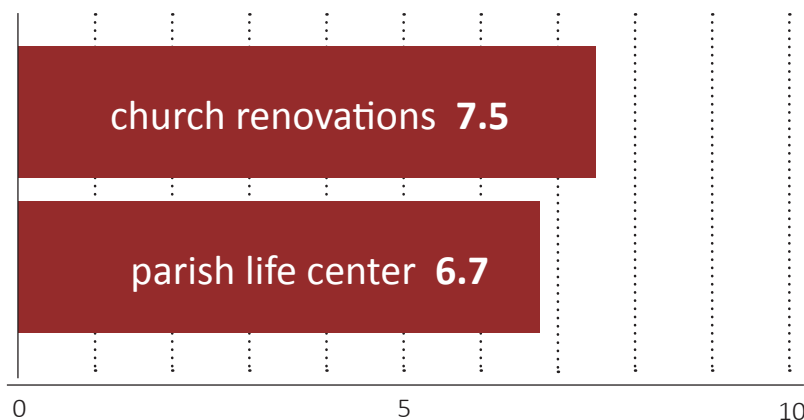
# PLANNING STUDY RESULTS



Thank you, Saint Jude community, for your overwhelming response to our campaign planning study, which took place over six weeks in April and May. The study helped us gauge support for a major fundraising effort to complete Phase 1 of our master plan, while also garnering feedback on the proposed projects. The feedback we received confirmed a love for our community and a desire to plan for our future. The Steier Group, a Catholic fundraising and development firm, recently presented its findings and recommendations to parish leadership. **Here is a summary of the planning study results:**



## PRIORITY OF RESPONDENTS



**\*High Priority = 6.5 – 10; Moderate Priority = 5.0 - 6.49**

Scores were calculated by assigning a value of 10 points for a high priority, five points for a moderate priority, and zero points for a low priority. The cumulative value for each project was then divided by the number of responses.



## BY THE NUMBERS

**954**

households participated in an interview or survey

**94%**

were in favor of a campaign

**93%**

will make a personal gift to the campaign

**253**

respondents indicated they would like to help as a campaign volunteer and assist in securing campaign commitments



## OVERALL OBSERVATIONS

- Participants cherish the warm, welcoming community at Saint Jude, with many parishioners describing our parish as their “home.” The vibrant ministries and numerous opportunities for involvement have created a dynamic, active, and growing parish. Parishioners feel that the “spirit is alive” at Saint Jude!
- Respondents shared their affinity for the many priests and deacons who have served at Saint Jude over the years, especially Monsignor Corbett. Parishioners view Monsignor Corbett and the parish staff as trusted and competent leaders. Our Saint Jude community trusts the vision of parish leadership, recognizing the thoughtful, prayerful, discerning approach taken throughout the master planning process.
- Our community respects the need for additional space and is supportive of both the Parish Life Center and the church renovations. The overall desire is for plans that are functional and necessary over those that would increase the beauty of the campus. New restrooms are highly desired, and among the proposed church renovations, the columbarium, bride’s room, and additional classrooms have strong support.
- The preschool and school are outstanding educational institutions and are vital ministries of the parish. They help renew the congregation with young families. Respondents from both realize the benefits of additional planned space for their school activities, special events, and gatherings.



## KEY RECOMMENDATIONS

Based on the very positive results of the planning study, the Steier Group recommended that Saint Jude move forward with a campaign. Parish and school leaders decided immediately to begin preparations for a campaign ahead of a public launch this fall. We will keep the entire Saint Jude community apprised of key decisions and provide regular updates in the weeks and months to come.



## NEXT STEPS

- Finalize the campaign goals based on our parish’s long-range planning, responses in the planning study, and the projected funding potential.
- Identify and recruit a strong, diverse leadership and volunteer team to work on the capital campaign, ensuring representation from our parish schools, other ministries and committees, and all three language communities.
- Implement a transparent communications plan to answer questions raised during the study and ensure parishioners are updated throughout the process.

**YOUR INPUT HAS BEEN EXTREMELY BENEFICIAL AND WILL HELP ENSURE THE SUCCESS OF OUR UPCOMING CAMPAIGN! GOD BLESS YOU.**